



CATERPILLAR

MARINE PROPULSION ENGINE

3406

250 - 402 hp

Features

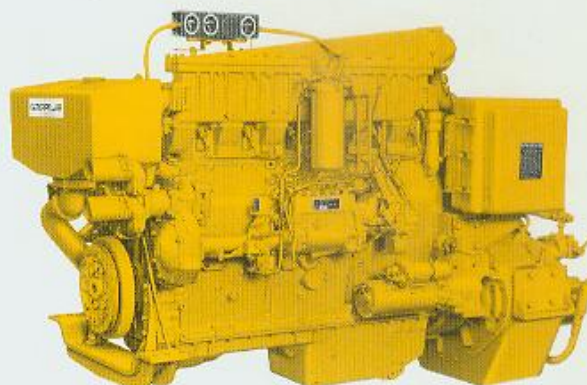
- **Fuel Efficient** — low friction three-ring piston design . . . direct injection fuel system
- **Reliable, Durable** — big displacement . . . steel spacer plate between head and block to eliminate counterboring
- **Compact and Easy to Maintain** — adjustment-free fuel system . . . spin-on fuel and lube filters . . . 60% parts reusability
- **Complete Packages** — Cat generators and 7200 series transmissions designed for Cat Engines . . . matched packages for ease of installation and maximum operational efficiency

Standard Equipment

- **Air Intake**
service indicator with dry air cleaner
- **Cooling**
expansion tank, water pumps, thermostats, lube oil and transmission oil cooler
- **Exhaust**
watercooled exhaust manifold and turbocharger
- **Flywheel and Flywheel Housing**, SAE No. 1
- **Fuel**
priming and transfer pumps, filter
- **Governor**, hydra-mechanical
- **Instruments and Gauges**
panel with oil pressure, fuel pressure, and coolant temperature gauges
tachometer drive, service meter
- **Lubricating**
oil pump, manual sump pump, oil filters

Accessory Equipment

- **Air Cleaner Adapter**
- **Control**
remote-mounted pilot house controls
- **Cooling**
auxiliary pump, heat exchanger
- **Exhaust**
muffler, watercooled elbow
- **Fuel**, primary filter
- **Instruments and Gauges**
engine-mounted premium panels, pilot house panels, tachometer
- **Power Takeoffs**
auxiliary drive, front enclosed clutches, hydraulic pump drive
- **Protection Devices**
coolant temperature and oil pressure contactors, overspeed and solenoid shutoffs
- **Starting**
air, electric



TA Shown with Accessory Equipment

Specifications

In Line 6, 4-Stroke-Cycle Diesel

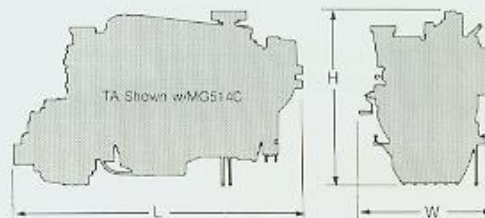
Bore — in (mm)	5.40 (137)
Stroke — in (mm)	6.50 (165)
Displacement — cu in (liter)	893 (14.6)
Rotation (from flywheel end)	Counterclockwise
Weight, Net Dry (approximate) — lb (kg)	
Turbocharged (T)	3,090 (1403)
Turbocharged-Aftercooled (TA)	3,240 (1470)

Marine Transmission

Transmission Weight, Net Dry (approximate) — lb (kg)

MG509 1.45:1, 2:1, 2.95:1	555 (251)
MG509 3.83:1, 4.5:1	715 (324)
MG514C 2:1, 2.5:1, 3:1, 3.5:1	1,150 (522)
MG514C 4.5:1, 6:1	1,360 (617)

Dimensions



		L		H		W	
		in	mm	in	mm	in	mm
3406 T	MG509—1.45:1, 2:1, 2.95:1	54.8	(2153)	48.9	(1241)	41.4	(1053)
3406 T	MG509—3.83:1, 4.5:1	58.0	(2236)	51.5	(1309)	41.4	(1053)
3406 TA	MG514C—2:1, 2.5:1, 3:1, 3.5:1	90.1	(2290)	54.5	(1385)	41.4	(1053)
3406 TA	MG514C—4.5:1, 6:1	93.6	(2382)	61.5	(1562)	41.4	(1053)